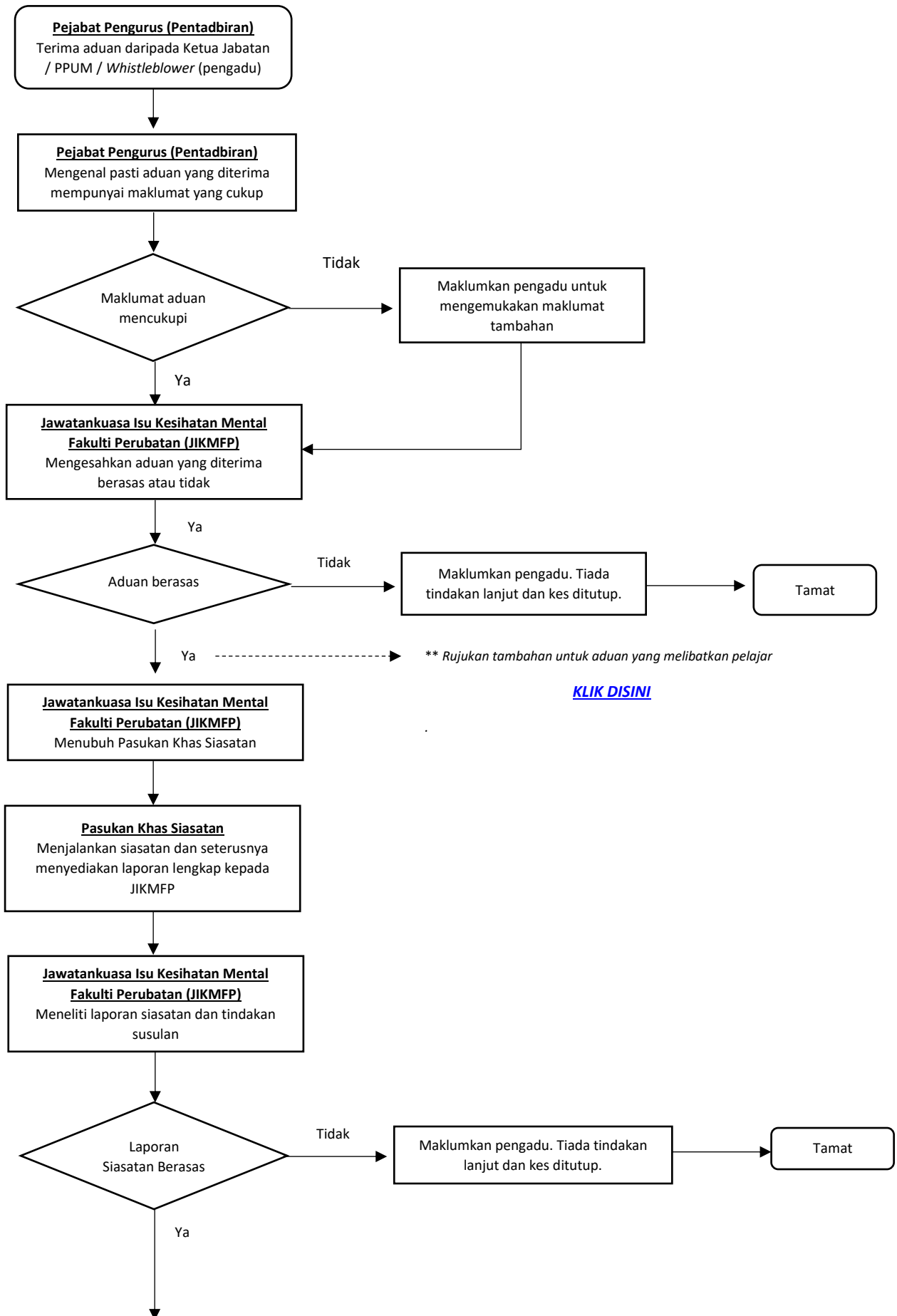
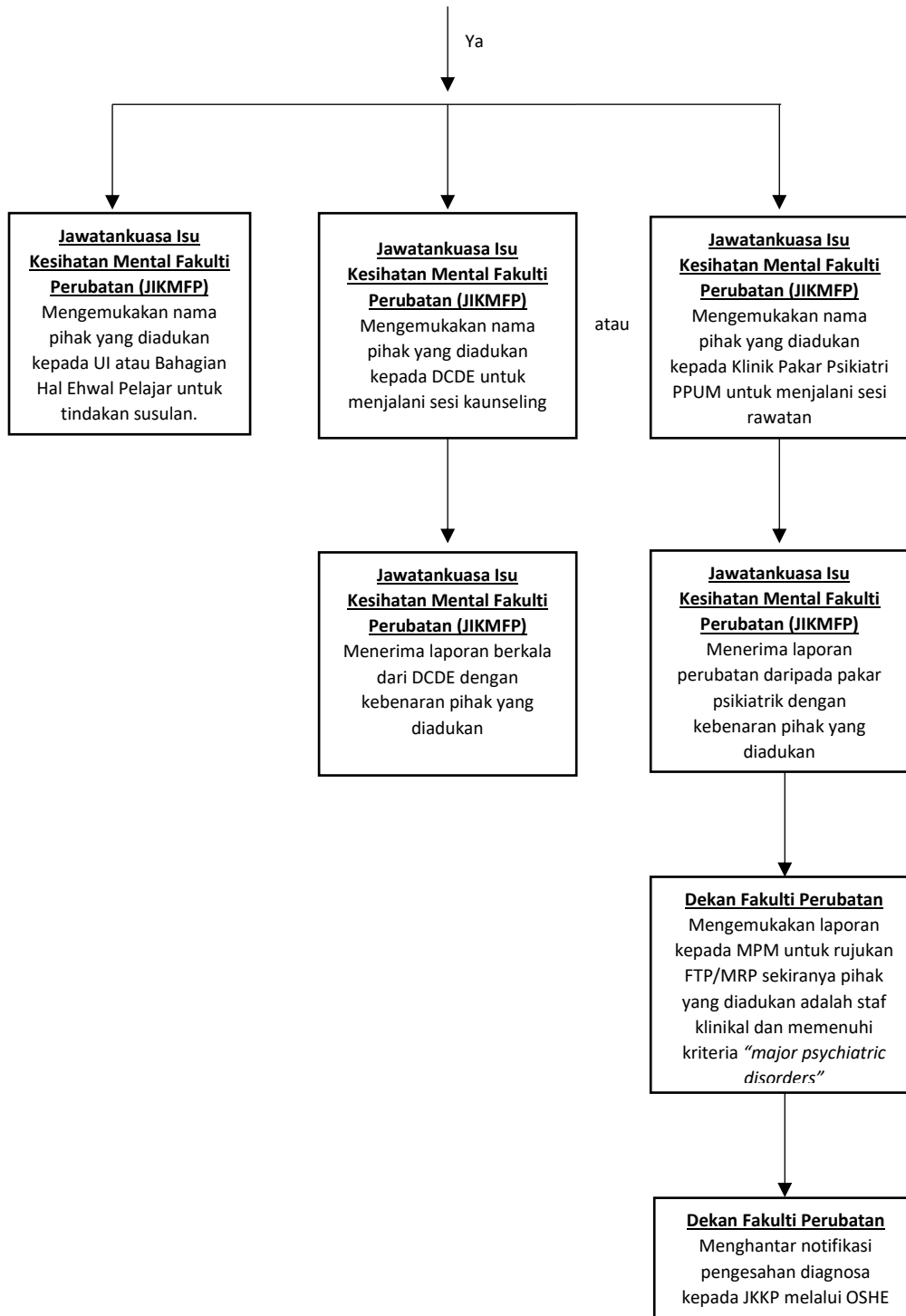


CARTA ALIR





** Rujukan tambahan untuk pelajar; Dokumen Tatacara Pengendalian Piawai Kes Kesejahteraan Emosi di Universiti Malaya

<https://hep.um.edu.my/SEKSYEN%20KAUNSELING/KAUNSELING/TATACARA%20PENGENDALIAN%20PIAWAI%20%20KES%20KESEJAHTERAAN%20EMOSI%20DI%20UNIVERSITI%20MALAYA-edited%2024%20sept%202021%20Pn%20Maznah.docx.pdf>